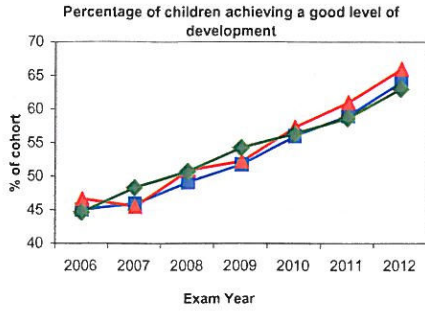


EARLY YEARS FOUNDATION STAGE

Percentage of children achieving a good level of development (Maintained Schools + PVI)

Previous Framework



New Framework



Previous Framework

	LA %	Nat %	SN %	Diff LA/Nat	Diff LA/SN
2006	45	45	47	0	-2
2007	48	46	46	2	3
2008	51	49	51	2	0
2009	54	52	52	3	2
2010	56	56	57	0	-1
2011	59	59	61	0	-2
2012	63	64	66	-1	-3

New Framework

	LA %
2013	46

Previous Framework

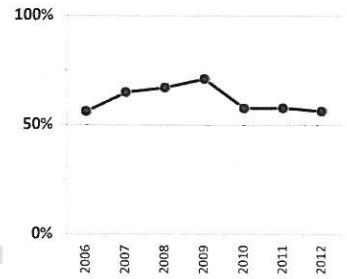
"Good level of development" is defined as achievement of at least 78 points across the Early Years Foundation stage with at least a score of 6 in each of the scales in Personal Social and Emotional Development and Communication, Language and Literacy

New Framework

"Good level of development" is defined as achieving at least the expected level in:

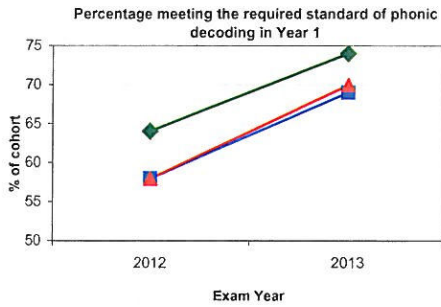
- the early learning goals in the prime areas of learning (personal, social and emotional development; physical development; and communication and language) and;
- the early learning goals in the specific areas of mathematics and literacy

National Percentile Rank  
 100% = Best performing LA in England



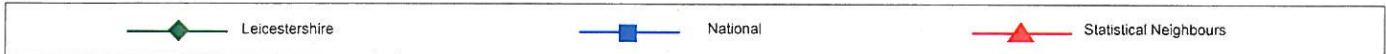
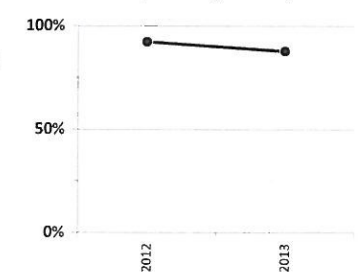
PHONICS DECODING AT YEAR 1

Percentage meeting the required standard of phonic decoding at Year 1

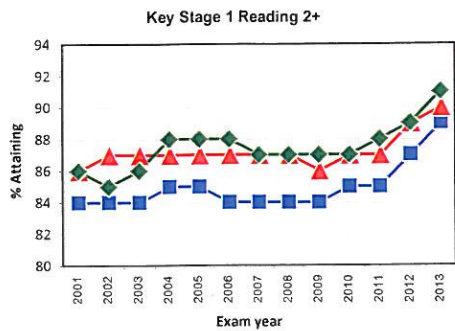


	LA %	Nat %	SN %	Diff LA/Nat	Diff LA/SN
2012	64	58	58	6	6
2013	74	69	70	5	4

National Percentile Rank  
 100% = Best performing LA in England

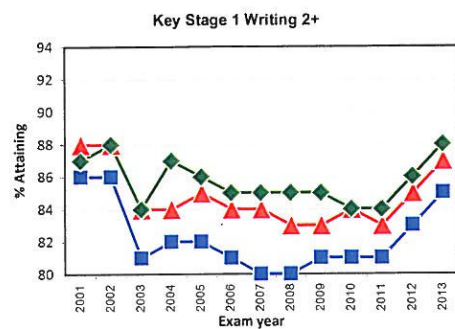
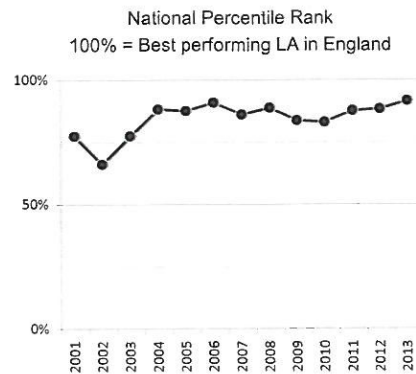


KEY STAGE 1  
HISTORIC LA, NATIONAL AND STATISTICAL NEIGHBOUR COMPARISONS



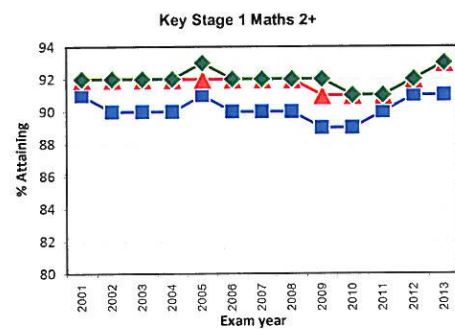
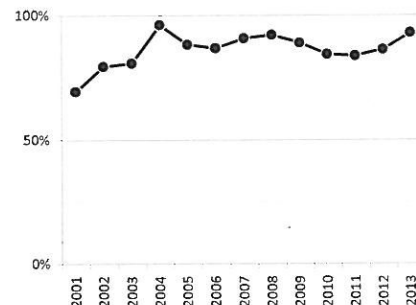
Reading 2+

Year	LA %	Nat %	SN %	Diff LA/Nat	Diff LA/SN
2001	86	84	86	2	0
2002	85	84	87	1	-2
2003	86	84	87	2	-1
2004	88	85	87	3	1
2005	88	85	87	3	1
2006	88	84	87	4	1
2007	87	84	87	3	0
2008	87	84	87	3	0
2009	87	84	86	3	1
2010	87	85	87	2	0
2011	88	85	87	3	1
2012	89	87	89	2	0
2013	91	89	90	2	1



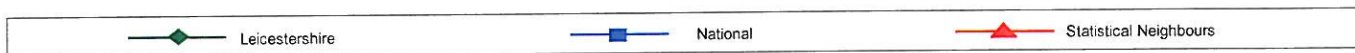
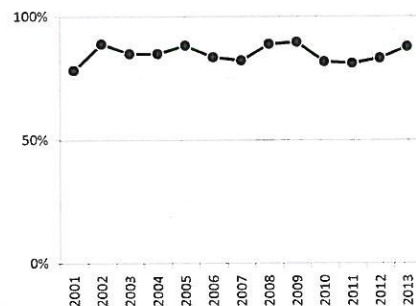
Writing 2+

Year	LA %	Nat %	SN %	Diff LA/Nat	Diff LA/SN
2001	87	86	88	1	-1
2002	88	86	88	2	0
2003	84	81	84	3	0
2004	87	82	84	5	3
2005	86	82	85	4	1
2006	85	81	84	4	1
2007	85	80	84	5	1
2008	85	80	83	5	2
2009	85	81	83	4	2
2010	84	81	84	3	0
2011	84	81	83	3	1
2012	86	83	85	3	1
2013	88	85	87	3	1



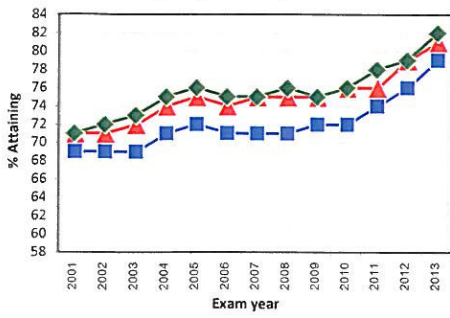
Maths 2+

Year	LA %	Nat %	SN %	Diff LA/Nat	Diff LA/SN
2001	92	91	92	1	0
2002	92	90	92	2	0
2003	92	90	92	2	0
2004	92	90	92	2	0
2005	93	91	92	2	1
2006	92	90	92	2	0
2007	92	90	92	2	0
2008	92	90	92	2	0
2009	92	89	91	3	1
2010	91	89	91	2	0
2011	91	90	91	1	0
2012	92	91	92	1	0
2013	93	91	93	2	0



KEY STAGE 1  
HISTORIC LA, NATIONAL AND STATISTICAL NEIGHBOUR COMPARISONS

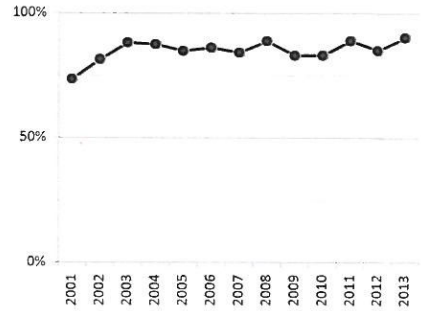
Key Stage 1 Reading 2B+



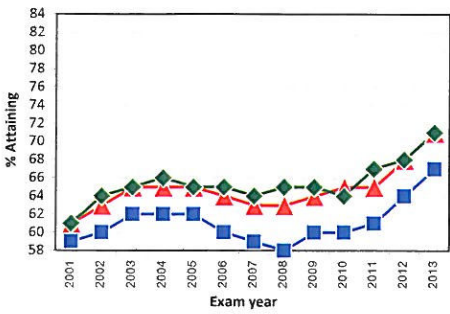
Reading 2B+

Year	LA %	Nat %	SN %	Diff LA/Nat	Diff LA/SN
2001	71	69	71	2	0
2002	72	69	71	3	1
2003	73	69	72	4	1
2004	75	71	74	4	1
2005	76	72	75	4	1
2006	75	71	74	4	1
2007	75	71	75	4	0
2008	76	71	75	5	1
2009	75	72	75	3	0
2010	76	72	76	4	0
2011	78	74	76	4	2
2012	79	76	79	3	0
2013	82	79	81	3	1

National Percentile Rank  
100% = Best performing LA in England

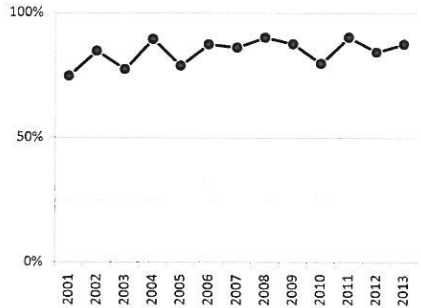


Key Stage 1 Writing 2B+

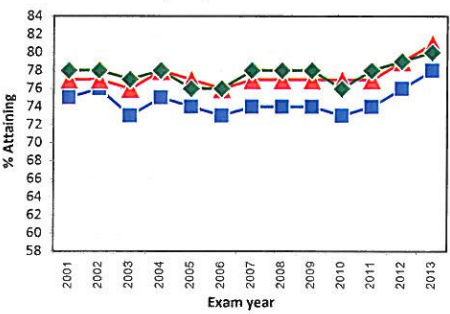


Writing 2B+

Year	LA %	Nat %	SN %	Diff LA/Nat	Diff LA/SN
2001	61	59	61	2	0
2002	64	60	63	4	1
2003	65	62	65	3	0
2004	66	62	65	4	1
2005	65	62	65	3	0
2006	65	60	64	5	1
2007	64	59	63	5	1
2008	65	58	63	7	2
2009	65	60	64	5	1
2010	64	60	65	4	-1
2011	67	61	65	6	2
2012	68	64	68	4	0
2013	71	67	71	4	0

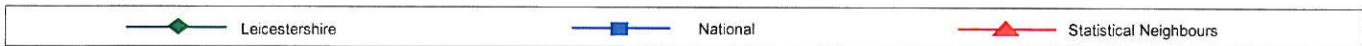
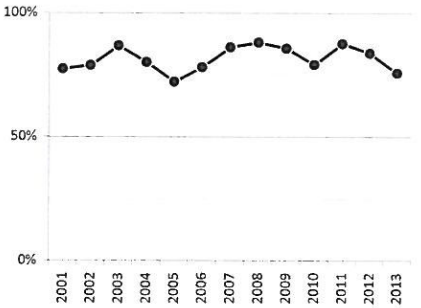


Key Stage 1 Maths 2B+

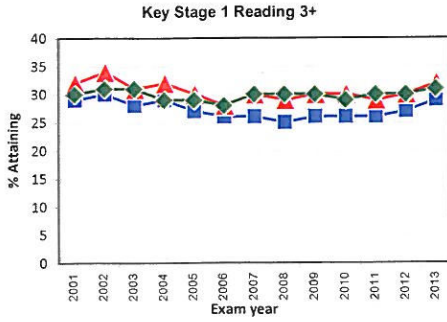


Maths 2B+

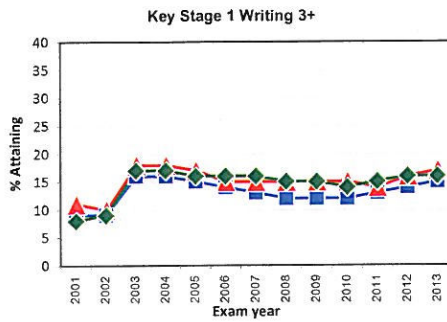
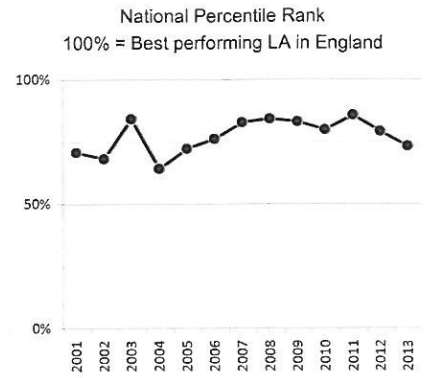
Year	LA %	Nat %	SN %	Diff LA/Nat	Diff LA/SN
2001	78	75	77	3	1
2002	78	76	77	2	1
2003	77	73	76	4	1
2004	78	75	78	3	0
2005	76	74	77	2	-1
2006	76	73	76	3	0
2007	78	74	77	4	1
2008	78	74	77	4	1
2009	78	74	77	4	1
2010	76	73	77	3	-1
2011	78	74	77	4	1
2012	79	76	79	3	0
2013	80	78	81	2	-1



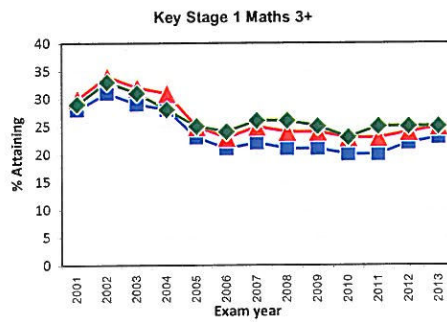
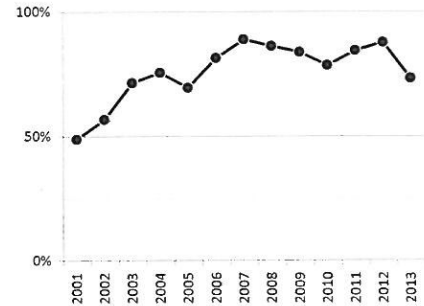
KEY STAGE 1  
HISTORIC LA, NATIONAL AND STATISTICAL NEIGHBOUR COMPARISONS



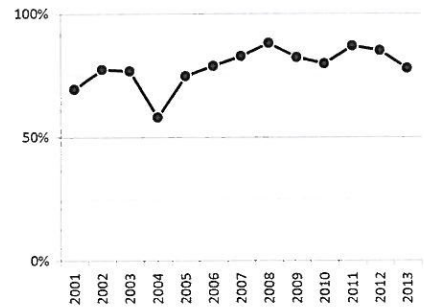
Year	LA %	Nat %	SN %	Diff LA/Nat	Diff LA/SN
2001	30	29	32	1	-2
2002	31	30	34	1	-3
2003	31	28	31	3	0
2004	29	29	32	0	-3
2005	29	27	30	2	-1
2006	28	26	28	2	0
2007	30	26	30	4	0
2008	30	25	29	5	1
2009	30	26	30	4	0
2010	29	26	30	3	-1
2011	30	26	29	4	1
2012	30	27	30	3	0
2013	31	29	32	2	-1



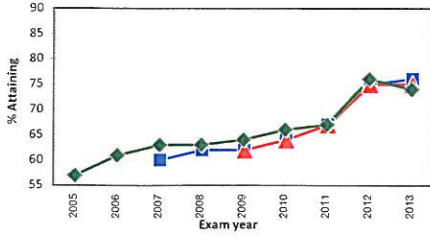
Year	LA %	Nat %	SN %	Diff LA/Nat	Diff LA/SN
2001	8	9	11	-1	-3
2002	9	9	10	0	-1
2003	17	16	18	1	-1
2004	17	16	18	1	-1
2005	16	15	17	1	-1
2006	16	14	15	2	1
2007	16	13	15	3	1
2008	15	12	15	3	0
2009	15	12	15	3	0
2010	14	12	15	2	-1
2011	15	13	14	2	1
2012	16	14	16	2	0
2013	16	15	17	1	-1



Year	LA %	Nat %	SN %	Diff LA/Nat	Diff LA/SN
2001	29	28	30	1	-1
2002	33	31	34	2	-1
2003	31	29	32	2	-1
2004	28	28	31	0	-3
2005	25	23	25	2	0
2006	24	21	23	3	1
2007	26	22	25	4	1
2008	26	21	24	5	2
2009	25	21	24	4	1
2010	23	20	23	3	0
2011	25	20	23	5	2
2012	25	22	24	3	1
2013	25	23	25	2	0



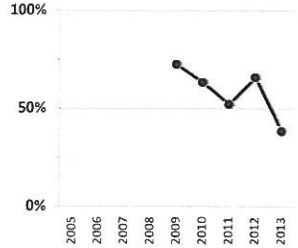
11 year olds achieving level 4+ in Reading, Writing and Maths



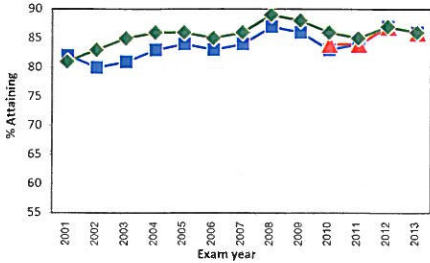
Reading, Writing and Maths 4+

	LA %	Nat %	SN %	Diff LA/Nat	Diff LA/SN
2005	57				
2006	61				
2007	63	60		3	
2008	63	62		1	
2009	64	62	62	2	2
2010	66	64	64	2	2
2011	67	67	67	0	0
2012	76	75	75	1	1
2013	74	76	75	-2	-1

National Percentile Rank  
100% = Best performing LA in England

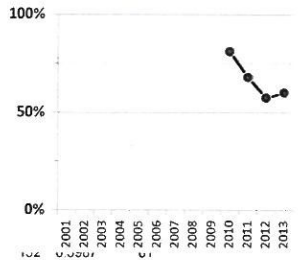


11 year olds achieving level 4+ in Reading

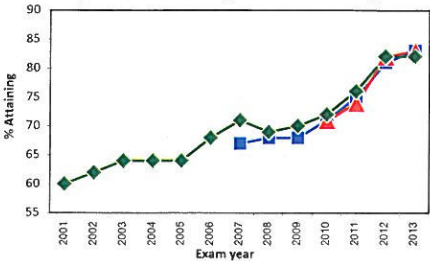


Reading 4+

	LA %	Nat %	SN %	Diff LA/Nat	Diff LA/SN
2001	81	82		-1	
2002	83	80		3	
2003	85	81		4	
2004	86	83		3	
2005	86	84		2	
2006	85	83		2	
2007	86	84		2	
2008	89	87		2	
2009	88	86		2	
2010	86	83	84	3	2
2011	85	84	84	1	1
2012	87	87	87	0	0
2013	86	86	86	0	0

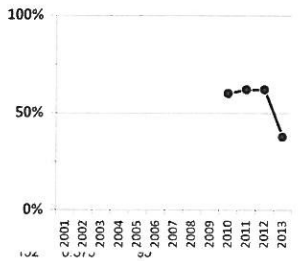


11 year olds achieving level 4+ in Writing



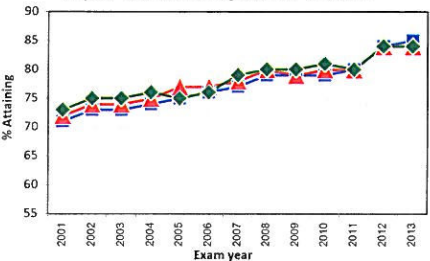
Writing 4+

	LA %	Nat %	SN %	Diff LA/Nat	Diff LA/SN
2001	60				
2002	62				
2003	64				
2004	64				
2005	64				
2006	68				
2007	71	67		4	
2008	69	68		1	
2009	70	68		2	
2010	72	71	71	1	1
2011	76	75	74	1	2
2012	82	81	82	1	0
2013	82	83	83	-1	-1



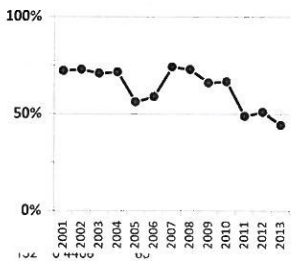
From 2012 onwards Teacher Assessment replaced Test

11 year olds achieving level 4+ in Maths

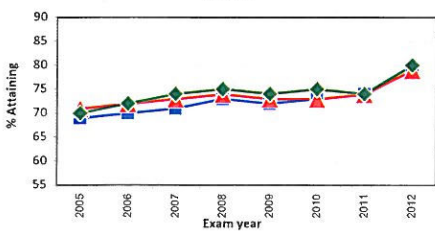


Maths 4+

	LA %	Nat %	SN %	Diff LA/Nat	Diff LA/SN
2001	73	71	72	2	1
2002	75	73	74	2	1
2003	75	73	74	2	1
2004	76	74	75	2	1
2005	75	75	77	0	2
2006	76	76	77	0	1
2007	79	77	78	2	1
2008	80	79	80	1	0
2009	80	79	79	1	1
2010	81	79	80	2	1
2011	80	80	80	0	0
2012	84	84	84	0	0
2013	84	85	84	-1	0

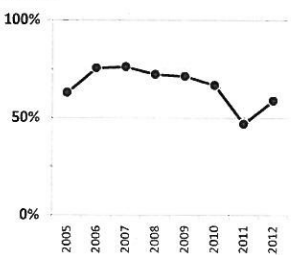


11 year olds achieving level 4+ in English and Maths

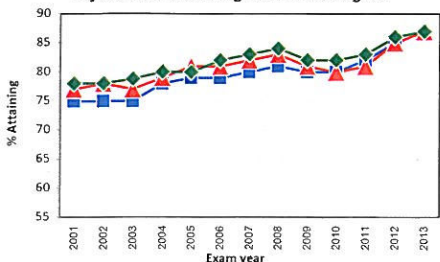


English and Maths 4+ (superseded measure)

	LA %	Nat %	SN %	Diff LA/Nat	Diff LA/SN
2005	70	69	71	1	0
2006	72	70	72	2	0
2007	74	71	73	3	1
2008	75	73	74	2	1
2009	74	72	73	2	1
2010	75	73	73	2	2
2011	74	74	74	0	0
2012	80	79	79	1	1

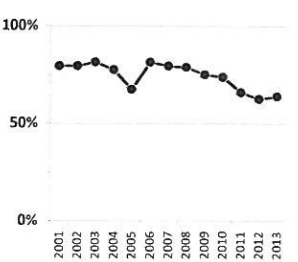


11 year olds achieving level 4+ in English



English 4+ (superseded measure)

	LA %	Nat %	SN %	Diff LA/Nat	Diff LA/SN
2001	78	75	77	3	1
2002	78	75	78	3	0
2003	79	75	77	4	2
2004	80	78	79	2	1
2005	80	79	81	1	-1
2006	82	79	81	3	1
2007	83	80	82	3	1
2008	84	81	83	3	1
2009	82	80	81	2	1
2010	82	80	80	2	2
2011	83	82	81	1	2
2012	86	85	85	1	1
2013	87	87	87	0	0

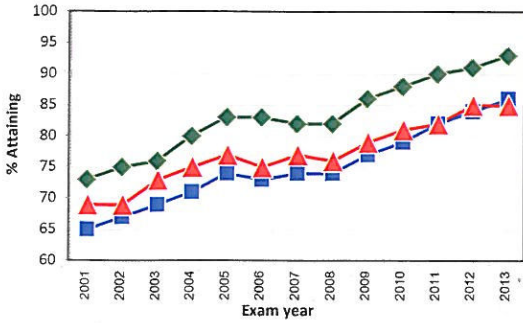


From 2013 Teacher Assessment replaces Test





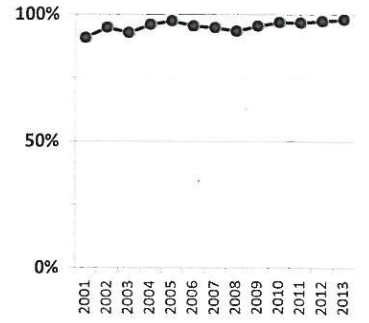
14 year olds achieving level 5+ English



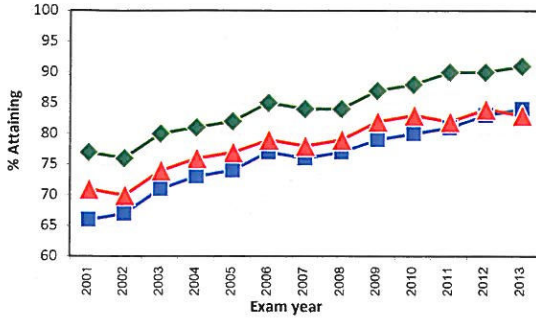
English 5+

	LA %	Nat %	SN %	Diff LA/Nat	Diff LA/SN
2001	73	65	69	8	4
2002	75	67	69	8	6
2003	76	69	73	7	3
2004	80	71	75	9	5
2005	83	74	77	9	6
2006	83	73	75	10	8
2007	82	74	77	8	5
2008	82	74	76	8	6
2009	86	77	79	9	7
2010	88	79	81	9	7
2011	90	82	82	8	8
2012	91	84	85	7	6
2013	93	86	85	7	8

National Percentile Rank  
100% = Best performing LA in England

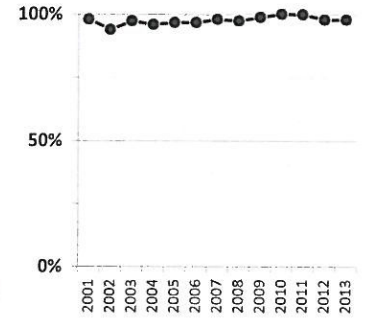


14 year olds achieving level 5+ Maths

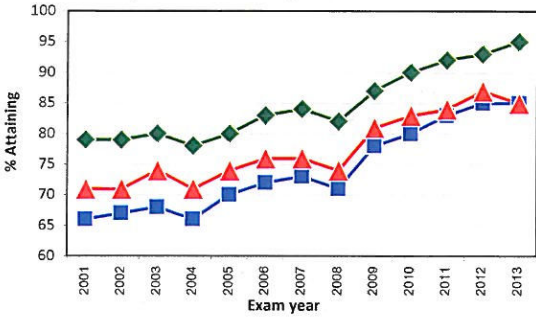


Maths 5+

	LA %	Nat %	SN %	Diff LA/Nat	Diff LA/SN
2001	77	66	71	11	6
2002	76	67	70	9	6
2003	80	71	74	9	6
2004	81	73	76	8	5
2005	82	74	77	8	5
2006	85	77	79	8	6
2007	84	76	78	8	6
2008	84	77	79	7	5
2009	87	79	82	8	5
2010	88	80	83	8	5
2011	90	81	82	9	8
2012	90	83	84	7	6
2013	91	84	83	7	8

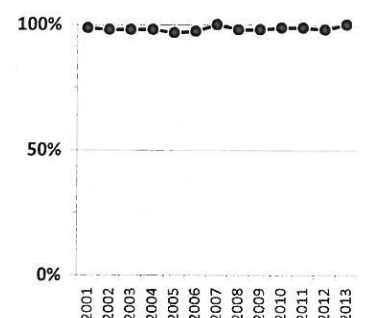


14 year olds achieving level 5+ Science

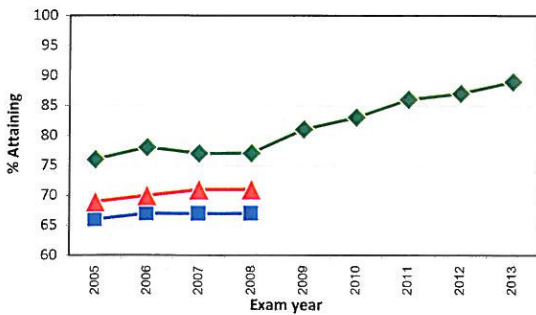


Science 5+

	LA %	Nat %	SN %	Diff LA/Nat	Diff LA/SN
2001	79	66	71	13	8
2002	79	67	71	12	8
2003	80	68	74	12	6
2004	78	66	71	12	7
2005	80	70	74	10	6
2006	83	72	76	11	7
2007	84	73	76	11	8
2008	82	71	74	11	8
2009	87	78	81	9	6
2010	90	80	83	10	7
2011	92	83	84	9	8
2012	93	85	87	8	6
2013	95	85	85	10	10



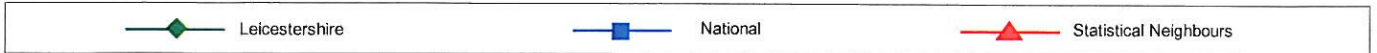
14 year olds achieving level 5+ English and Maths



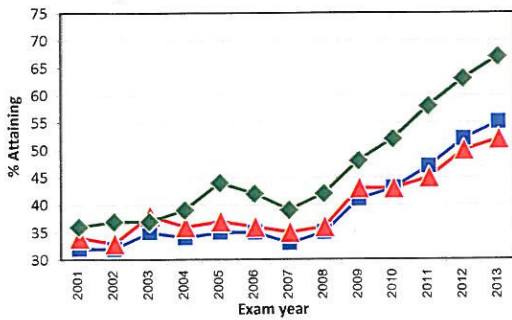
English and Maths 5+

	LA %	Nat %	SN %	Diff LA/Nat	Diff LA/SN
2005	76	66	69	10	7
2006	78	67	70	11	8
2007	77	67	71	10	6
2008	77	67	71	10	6
2009	81	71	71	10	6
2010	83	71	71	10	6
2011	86	71	71	10	6
2012	87	71	71	10	6
2013	89	71	71	10	6

Please note attainment at Key Stage 3 prior to 2009 relates to Test data, from 2009 the data relates to Teacher Assessments



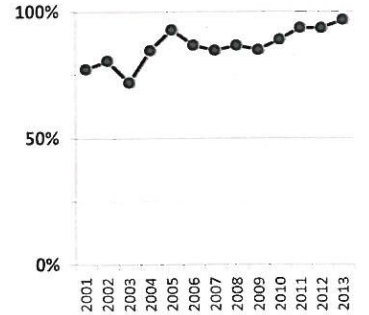
14 year olds achieving level 6+ English



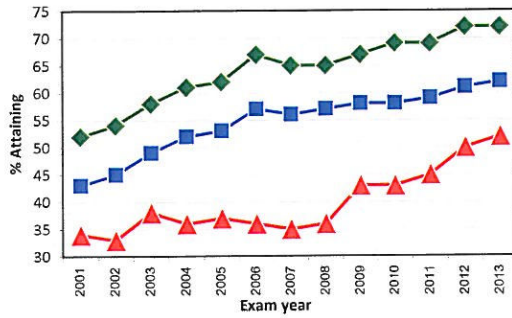
English 6+

	LA %	Nat %	SN %	Diff LA/Nat	Diff LA/SN
2001	36	32	34	4	2
2002	37	32	33	5	4
2003	37	35	38	2	-1
2004	39	34	36	5	3
2005	44	35	37	9	7
2006	42	35	36	7	6
2007	39	33	35	6	4
2008	42	35	36	7	6
2009	48	41	43	7	5
2010	52	43	43	9	9
2011	58	47	45	11	13
2012	63	52	50	11	13
2013	67	55	52	12	15

National Percentile Rank  
100% = Best performing LA in England

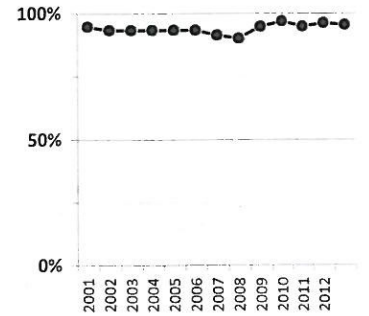


14 year olds achieving level 6+ Maths

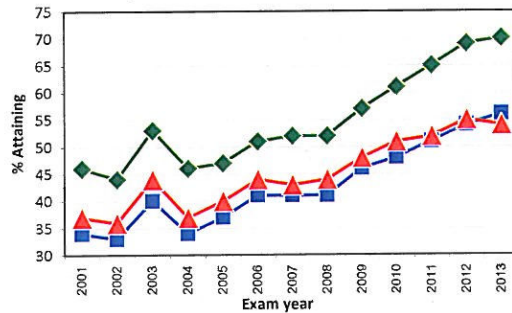


Maths 6+

	LA %	Nat %	SN %	Diff LA/Nat	Diff LA/SN
2001	52	43	46	9	6
2002	54	45	48	9	6
2003	58	49	53	9	5
2004	61	52	55	9	6
2005	62	53	56	9	6
2006	67	57	61	10	6
2007	65	56	59	9	6
2008	65	57	61	8	4
2009	67	58	61	9	6
2010	69	58	61	11	8
2011	69	59	60	10	9
2012	72	61	62	11	10
2013	72	62	62	10	10

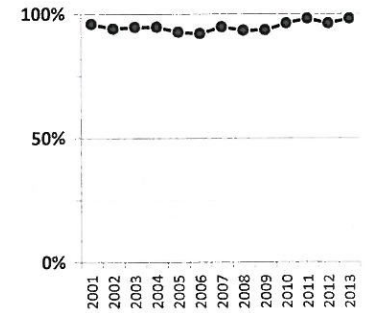


14 year olds achieving level 6+ Maths

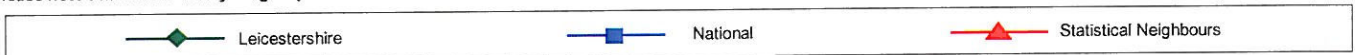


Science 6+

	LA %	Nat %	SN %	Diff LA/Nat	Diff LA/SN
2001	46	34	37	12	9
2002	44	33	36	11	8
2003	53	40	44	13	9
2004	46	34	37	12	9
2005	47	37	40	10	7
2006	51	41	44	10	7
2007	52	41	43	11	9
2008	52	41	44	11	8
2009	57	46	48	11	9
2010	61	48	51	13	10
2011	65	51	52	14	13
2012	69	54	55	15	14
2013	70	56	54	14	16



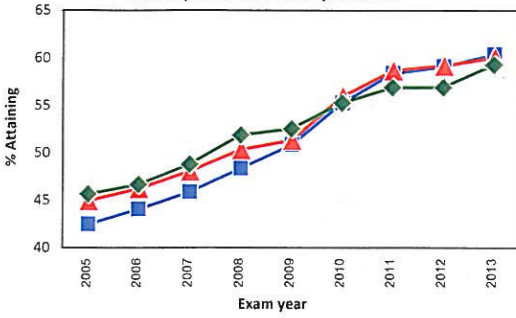
Please note attainment at Key Stage 3 prior to 2009 relates to Test data, from 2009 the data relates to Teacher Assessments





Notes: For 2013 no robust "All institution" (State Funded and Independent sector) national figures are available, all National comparisons for 2013 and before have been switched to the State Funded (SF) sector only (including Academies).

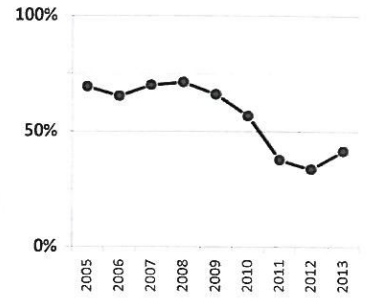
Key Stage 4 5+ A\*-C (including English and Maths) in GCSE or equivalent



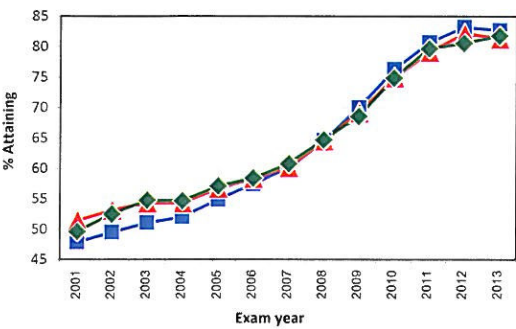
5+ A\*-C (inc Eng/Maths)

	Nat %				Diff	
	LA %	All	SF	SN %	LA/Nat	LA/SN
2005	45.7	44.7	42.5	45.0	3.2	0.7
2006	46.7	45.6	44.1	46.3	2.6	0.4
2007	48.8	46.3	45.9	48.1	2.9	0.7
2008	51.9	47.6	48.4	50.4	3.5	1.5
2009	52.6	49.8	50.9	51.4	1.7	1.2
2010	55.3	53.5	55.3	56.0	0	-0.7
2011	56.9	59.0	58.4	58.7	-1.5	-1.8
2012	56.9	59.4	59.1	59.2	-2.2	-2.3
<b>2013</b>	<b>59.3</b>	<b>60.4</b>	<b>60.1</b>	<b>-1.1</b>	<b>-0.8</b>	

National Percentile Rank  
 100% = Best performing LA in England

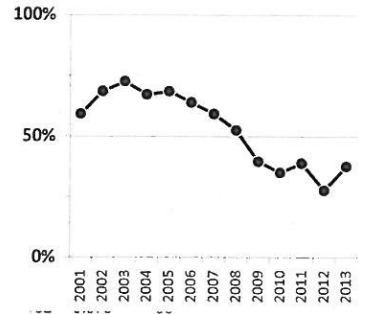


Key Stage 4 5+ A\*-C at GCSE or equivalent

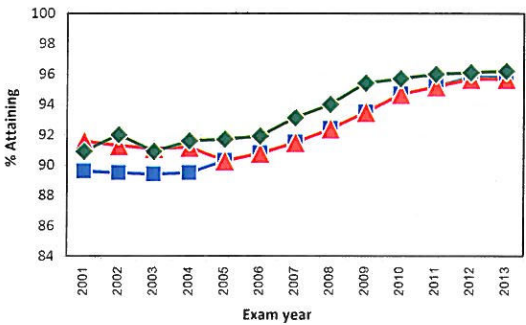


5+ A\*-C

	Nat %				Diff	
	LA %	All	SF	SN %	LA/Nat	LA/SN
2001	49.6	50.0	47.9	51.5	1.7	-1.9
2002	52.5	51.6	49.5	53.2	3	-0.7
2003	54.8	52.9	51.1	54.4	3.7	0.4
2004	54.7	53.7	52.0	54.4	2.7	0.3
2005	57.1	56.8	54.9	56.8	2.2	0.3
2006	58.4	59.0	57.5	58.4	0.9	0
2007	60.8	61.4	60.1	60.2	0.7	0.6
2008	64.7	65.3	64.6	64.6	0.1	0.1
2009	68.6	70.0	70.0	69.2	-1.4	-0.6
2010	74.9	75.4	76.3	75.0	-1.4	-0.1
2011	79.7	79.6	80.7	79.2	-1	0.5
2012	80.6	81.9	83.2	82.2	-2.6	-1.6
<b>2013</b>	<b>81.8</b>	<b>82.7</b>	<b>81.4</b>	<b>-0.9</b>	<b>0.4</b>	

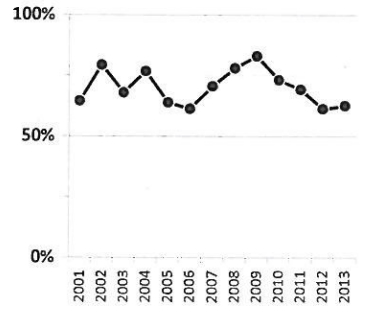


Key Stage 4 5+ A\*-G at GCSE or equivalent

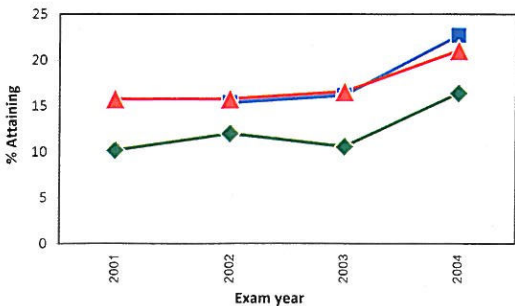


5+ A\*-G

	Nat %				Diff	
	LA %	All	SF	SN %	LA/Nat	LA/SN
2001	90.9	88.9	89.6	91.6	1.3	-0.7
2002	92.0	88.9	89.5	91.3	2.5	0.7
2003	90.9	88.8	89.4	91.1	1.5	-0.2
2004	91.6	88.8	89.5	91.2	2.1	0.4
2005	91.7	90.2	90.3	90.3	1.4	1.4
2006	91.9	90.5	90.8	90.8	1.1	1.1
2007	93.1	91.7	91.5	91.5	1.6	1.6
2008	94.0	91.6	92.4	92.4	1.6	1.6
2009	95.4	92.3	93.5	93.5	1.9	1.9
2010	95.7	92.9	94.7	94.7	1.0	1.0
2011	96.0	93.5	95.2	95.2	0.8	0.8
2012	96.1	93.6	95.8	95.7	0.3	0.4
<b>2013</b>	<b>96.2</b>	<b>95.8</b>	<b>95.7</b>	<b>0.4</b>	<b>0.5</b>	

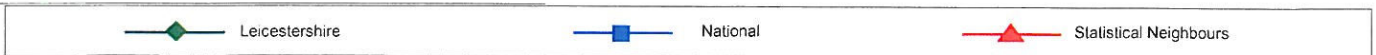
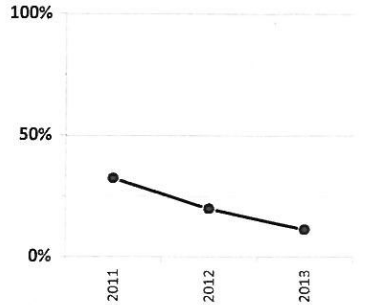


Key Stage 4 The English Baccalaureate



The English Baccalaureate

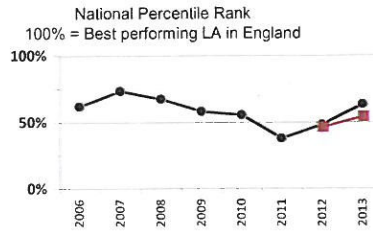
	Nat %				Diff	
	LA %	All	SF	SN %	LA/Nat	LA/SN
2010	10.2	15.6	15.8	15.8	-5.6	-5.6
2011	12.0	17.6	15.4	15.8	-3.4	-3.8
2012	10.6	18.3	16.2	16.6	-5.6	-6
<b>2013</b>	<b>16.4</b>	<b>22.7</b>	<b>21.1</b>	<b>21.1</b>	<b>-6.3</b>	<b>-4.7</b>



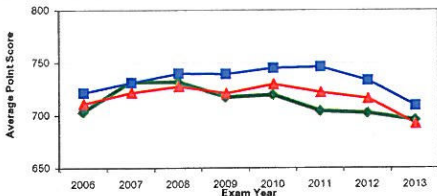
Notes: The National figure in the "All institutions" column is the National All Institution figure including both the State Funded (SF) and the Independent sector. It is compared at an LA level to all State Funded schools (includes FE Colleges).

**Key Stage 5: 16-18 year olds QCA Average Point Score per candidate**

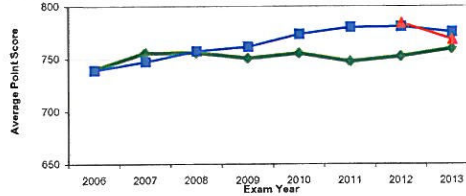
Year	All institutions (SF at LA level)			State Funded Schools inc Academies			Diff LA/Nat		Diff LA/SN	
	LA %	Nat %	SN %	LA %	Nat %	SN %	All	SF	All	SF
2006	703.2	721.5	711.3	739.4	739.3		-18.3	0.1	-8.1	
2007	731.7	731.1	721.7	755.7	747.3		0.6	8.4	10.0	
2008	731.7	739.8	727.5	755.8	757.4		-8.1	-1.6	4.2	
2009	717.1	739.1	720.9	750.8	761.6		-22.0	-10.8	-3.8	
2010	719.5	744.8	729.6	755.4	773.4		-25.3	-18.0	-10.1	
2011	703.9	745.9	721.8	747.5	779.9		-42.0	-32.4	-17.9	
2012	702.0	733.0	716.0	762.2	780.5	783.8	-31.0	-28.3	-14.0	-31.6
2013	695.3	709.1	691.9	759.4	775.5	768.4	-13.8	-16.1	3.4	-9.0



**All state funded institutions**

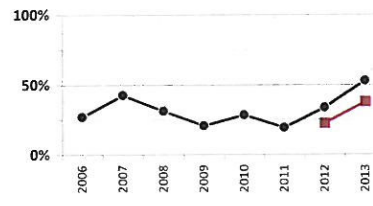


**State Funded Schools inc Academies**

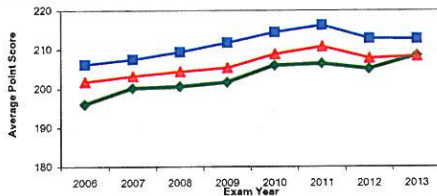


**Key Stage 5: 16-18 year olds QCA Average Point Score per exam entry**

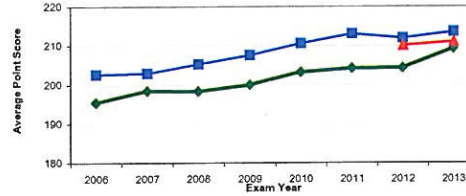
Year	All institutions (SF at LA level)			State Funded Schools inc Academies			Diff LA/Nat		Diff LA/SN	
	LA %	Nat %	SN %	LA %	Nat %	SN %	All	SF	All	SF
2006	196.0	206.2	201.8	195.4	202.6		-10.2	-7.2	-5.8	
2007	200.1	207.5	203.3	198.4	203.0		-7.4	-4.6	-3.2	
2008	200.5	209.4	204.4	198.3	205.3		-8.9	-7.0	-3.9	
2009	201.6	211.7	205.4	200.0	207.6		-10.1	-7.6	-3.8	
2010	205.9	214.4	208.9	203.2	210.6		-8.5	-7.4	-3.0	
2011	206.4	216.2	210.8	204.2	213.0		-9.8	-8.8	-4.4	
2012	205.0	212.8	207.8	204.3	211.9	210.1	-7.8	-7.6	-2.8	-5.8
2013	208.4	212.7	208.3	209.2	213.5	211.1	-4.3	-4.3	0.1	-1.9



**All state funded institutions**

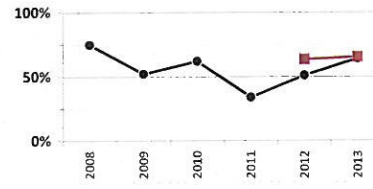


**State Funded Schools inc Academies**

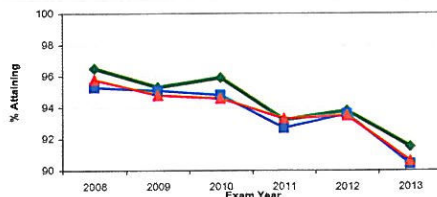


**Key Stage 5: 16-18 year olds achieving 2 or more passes of A-Level equiv**

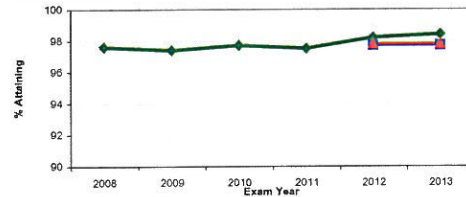
Year	All institutions (SF at LA level)			State Funded Schools inc Academies			Diff LA/Nat		Diff LA/SN	
	LA %	Nat %	SN %	LA %	Nat %	SN %	All	SF	All	SF
2008	96.5	95.3	95.8	97.6			1.2		0.7	
2009	95.3	95.1	94.8	97.4			0.2		0.5	
2010	95.9	94.8	94.6	97.7			1.1		1.3	
2011	93.2	92.7	93.3	97.5			0.5		-0.1	
2012	93.8	93.6	93.5	98.2	97.7	97.8	0.2	0.5	0.3	0.4
2013	91.5	90.4	90.6	98.4	97.7	97.8	1.1	0.7	0.9	0.6



**All state funded institutions**

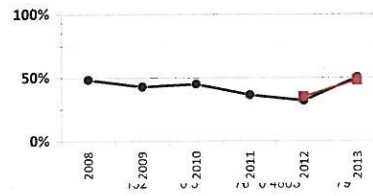


**State Funded Schools inc Academies**

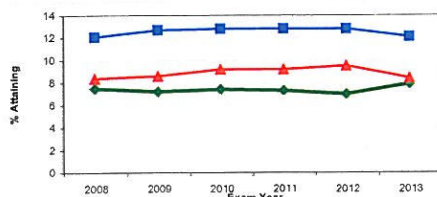


**Key Stage 5: 16-18 year olds achieving 3 or more A\*-A grades at GCE/Applied GCE A Level and Double Awards**

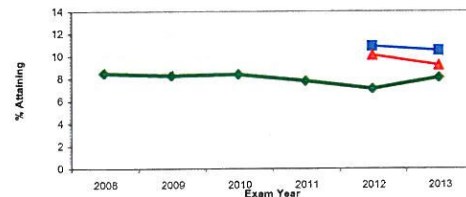
Year	All institutions (SF at LA level)			State Funded Schools inc Academies			Diff LA/Nat		Diff LA/SN	
	LA %	Nat %	SN %	LA %	Nat %	SN %	All	SF	All	SF
2008	7.5	12.1	8.4	8.5			-4.6		-0.9	
2009	7.2	12.7	8.6	8.3			-5.5		-1.4	
2010	7.4	12.8	9.2	8.4			-5.4		-1.8	
2011	7.3	12.8	9.2	7.8			-5.5		-1.9	
2012	7.0	12.8	9.5	7.1	10.9	10.1	-5.8	-3.8	-2.5	-3.0
2013	7.9	12.1	8.4	8.1	10.5	9.2	-4.2	-2.4	-0.5	-1.1



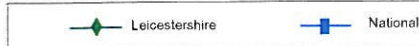
**All state funded institutions**



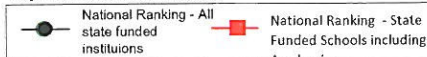
**State Funded Schools inc Academies**



**Key - Performance Graphs**

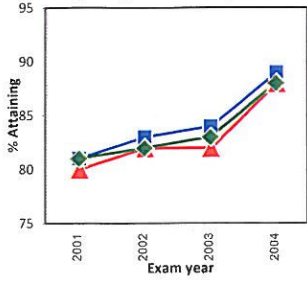


**Key - Percentile Ranking Graphs**

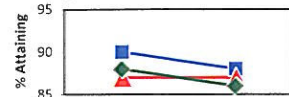


EXPECTED PROGRESS BETWEEN KEY STAGE 1 TO KEY STAGE 2

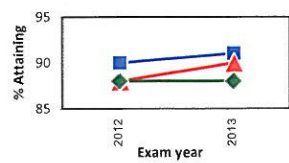
Key Stage 1 to 2 English



Key Stage 1 to 2 Reading



Key Stage 1 to 2 Writing



English (superseded measure from 2012)

	LA %	Nat %	SN %	Diff LA/Nat	Diff LA/SN
2009	81	81	80	0	1
2010	82	83	82	-1	0
2011	83	84	82	-1	1
2012	88	89	88	-1	0

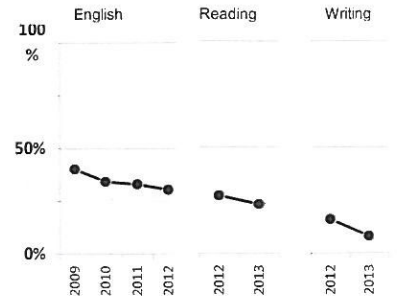
Reading

	LA %	Nat %	SN %	Diff LA/Nat	Diff LA/SN
2012	88	90	87	-2	1
2013	86	88	87	-2	-1

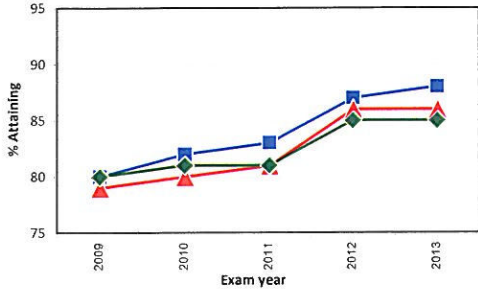
Writing

	LA %	Nat %	SN %	Diff LA/Nat	Diff LA/SN
2012	88	90	88	-2	0
2013	88	91	90	-3	-2

National Percentile Rank  
 100% = Best performing LA in England

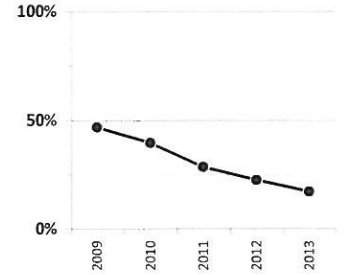


Key Stage 1 to 2 Maths



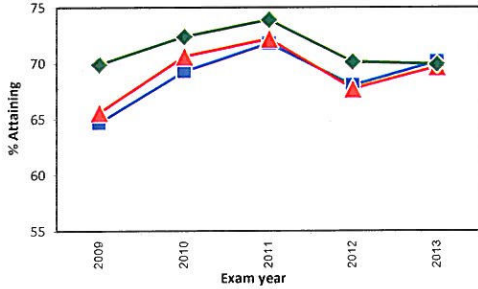
Mathematics

	LA %	Nat %	SN %	Diff LA/Nat	Diff LA/SN
2009	80	80	79	0	1
2010	81	82	80	-1	1
2011	81	83	81	-2	0
2012	85	87	86	-2	-1
2013	85	88	86	-3	-1



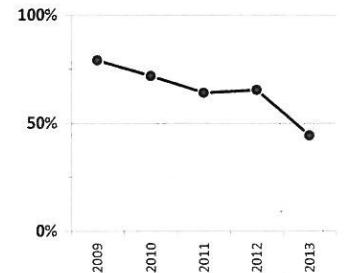
EXPECTED PROGRESS BETWEEN KEY STAGE 2 TO KEY STAGE 4

Key Stage 2 to 4 English

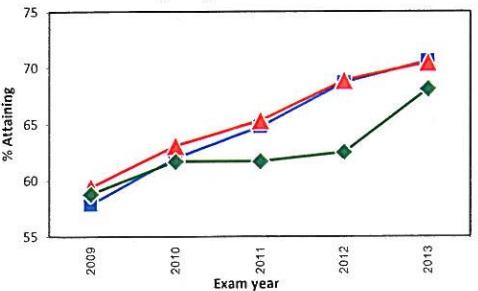


English

	LA %	Nat %	SN %	Diff LA/Nat	Diff LA/SN
2009	69.9	64.7	65.6	5.2	
2010	72.4	69.3	70.7	3.1	1.8
2011	73.9	71.8	72.2	2.1	1.7
2012	70.1	68.0	67.7	2.1	2.4
2013	69.9	70.1	69.7	-0.2	0.2



Key Stage 2 to 4 Maths



Maths

	LA %	Nat %	SN %	Diff LA/Nat	Diff LA/SN
2009	58.8	57.9	59.4	0.9	-0.6
2010	61.7	62.0	63.1	-0.3	-1.4
2011	61.7	64.8	65.4	-3.1	-3.7
2012	62.5	68.7	68.9	-6.2	-6.4
2013	68.1	70.6	70.5	-2.5	-2.4

